



Garden Grove Unified School District

10331 Stanford Avenue Garden Grove, CA 92840 ▪ www.ggusd.us

Gabriela Mafi, Ed.D., Superintendent ▪ gmafi@ggusd.us ▪ (714) 663-6000

SARC

2023-24

School Accountability
Report Card
Published in 2024-25



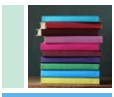
Hazard Elementary School

Grades TK-6
CDS Code 30-66522-6028716

Olivia Hufnagel, Principal
ohufnagel@ggusd.us

4218 West Hazard Avenue
Santa Ana, CA 92703
(714) 663-6403

<http://hazard.ggusd.us>



School Description

Hazard Elementary School is one of nearly 70 schools in Garden Grove Unified School District and serves students in grades TK-6 from the city of Santa Ana. Strong leadership is essential in a quality school and is provided at Hazard Elementary School by Olivia Hufnagel, the principal, a professional educator for 24 years. She was appointed principal of Hazard Elementary School in 2019.

School Safety

Maintaining a safe and orderly environment is essential to learning. All schools in the district are closed campuses, and visitors must immediately register in the school office before entering the campus. School access is monitored by administrators, teachers and other school staff.

All schools operate employee safety committees and maintain comprehensive school safety plans that are reviewed and updated annually at the beginning of the school year. Schools had until November 2024 to review and update their plans. The safety plans include elements such as emergency plans and procedures, Department of Homeland Security alert precautions, school rules and school dress codes.

School safety committees, consisting of certificated and classified staff, meet to address safety issues for students and employees. Earthquake safety procedures are distributed to all students and parents at the beginning of the school year. Fire drills are conducted monthly at each elementary school, no fewer than four times per year at each intermediate school and at least twice a year at each high school. Drop drills are held quarterly at each elementary school and at least once each semester at intermediate and high schools. All schools conduct one lockdown exercise each year.

In the spring of the 2023-24 school year, the district introduced and trained school sites and departments on the Standard Response Protocol (SRP), developed by the "I Love U Guys" Foundation. The SRP is a nationally recognized safety program designed to standardize responses to various emergencies, such as lockdowns, evacuations and shelter-in-place scenarios, ensuring a clear, consistent and effective approach for students, staff and first responders.

In the fall of 2024, the plan was implemented and shared with parents and students. To support training and awareness, posters and videos were created and distributed across the district.

Professional Development

GGUSD's professional-development program centers on research-based effective instruction with embedded strategies to scaffold and differentiate for diverse learners. Teachers are supported in their implementation of effective instruction through extensive training and targeted in-class support. The use of student-achievement data also assists in providing clear goals and expectations for planning in-services for teachers and paraprofessionals.

Intensive workshops are conducted in late August during the week before school starts to provide teachers with new knowledge and enhanced skills for the upcoming school year, with an emphasis on the strategies to support language learning in mathematics, English language arts and content areas. Staff-development opportunities are also offered after school and by release time throughout the school year to provide in-class demonstrations as well as opportunities to understand the standards and across content areas. Additionally, one non-student day is set aside each year for staff development for all high school teachers in the district. Teachers collaborate in grade level and course-alike teams throughout the school year to plan lessons, analyze student achievement data and student work to ensure a high quality and rigorous academic program with high student expectations.

New teachers are provided an extensive new teacher training program. Classroom management, the district's base program, report cards, parent-teacher conferences and research-based strategy instruction are just a few of the subjects of training for new teachers.



District Mission Statement

To ensure student success, we will provide a rigorous and supportive academic experience that motivates all learners to meet high expectations.

District Vision Statement

We are committed to preparing all students to be successful and responsible citizens who contribute and thrive in a diverse society.



School Accountability Report Card

In accordance with state and federal requirements, the School Accountability Report Card (SARC) is put forth annually by all public schools as a tool for parents and interested parties to stay informed of the school's progress, test scores and achievements.

Professional Development Days

Three-Year Data

	2022-23	2023-24	2024-25
Number of school days dedicated to staff development and continuous improvement	At least four days before the school year and one day during the school year for HS only	At least four days before the school year and one day during the school year for HS only	At least four days before the school year and one day during the school year for HS only

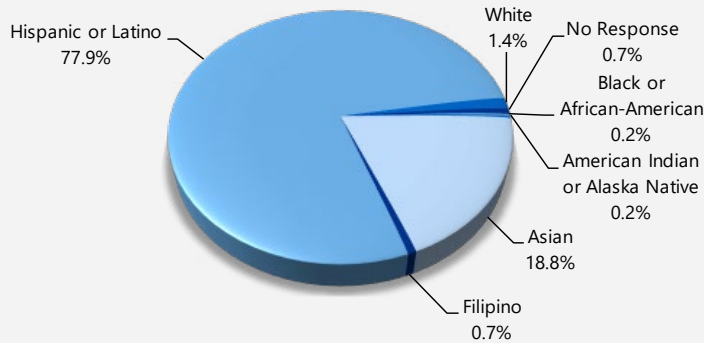


Enrollment by Student Group

The total enrollment at the school was 420 students for the 2023-24 school year. The pie chart displays the percentage of students enrolled in each group.

Demographics

2023-24 School Year

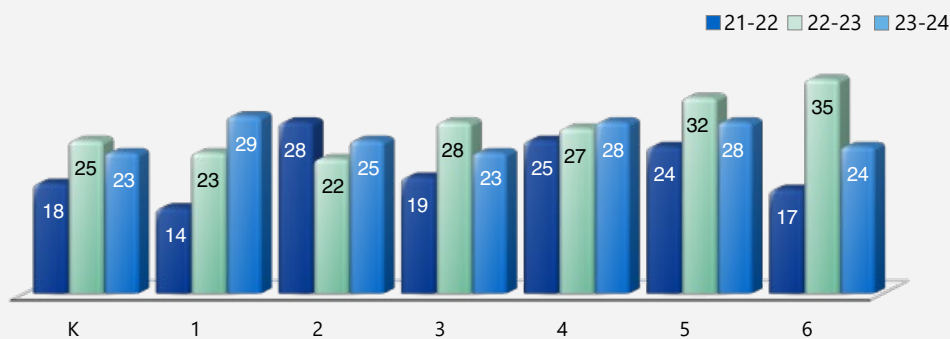


Class Size Distribution

The bar graph displays the three-year data for average class size, and the table displays the three-year data for the number of classrooms by size. The number of classes indicates how many classrooms fall into each size category (a range of total students per classroom). At the secondary school level, this information is reported by subject area rather than grade level.

Average Class Size

Three-Year Data



Number of Classrooms by Size

Three-Year Data

	2021-22			2022-23			2023-24		
Grade	Number of Students								
	1-20	21-32	33+	1-20	21-32	33+	1-20	21-32	33+
K	3				3			2	
1	2	1			2			2	
2		2			2			2	
3	1	2			2			2	
4			2		2			2	
5		2			2			2	
6	1	2				1		3	

Enrollment by Student Group

Demographics

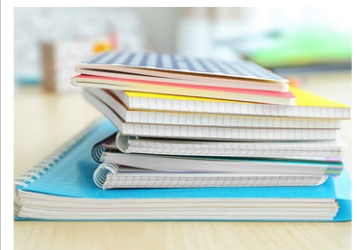
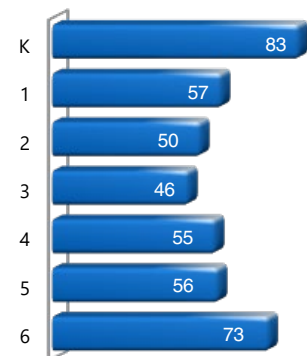
2023-24 School Year

Female	47.60%
Male	52.40%
Non-Binary	0.00%
English learners	50.00%
Foster youth	0.70%
Homeless	1.70%
Migrant	0.00%
Socioeconomically Disadvantaged	92.90%
Students with Disabilities	15.00%

Enrollment by Grade

The bar graph displays the total number of students enrolled in each grade for the 2023-24 school year.

2023-24 Enrollment by Grade





Suspensions and Expulsions

This table shows the school, district, and state suspension and expulsion rates collected between July through June, each full school year respectively. Note: Students are only counted one time, regardless of the number of suspensions.

Suspensions and Expulsions							Three-Year Data		
	Hazard ES			Garden Grove USD			California		
	21-22	22-23	23-24	21-22	22-23	23-24	21-22	22-23	23-24
Suspension rates	0.50%	0.20%	0.20%	2.90%	3.30%	2.50%	3.20%	3.60%	3.30%
Expulsion rates	0.00%	0.00%	0.00%	0.00%	0.00%	0.00%	0.10%	0.10%	0.10%

School Programs

The district receives additional funds for a number of special services and programs. Among the special programs offered at the school are the following:

- Extended Day and Year Programs:
 - After School Intervention Classes
 - After School English Language Development Classes
 - Summer Institutes
- Special Education
- Title I
- Boys and Girls Clubs of Garden Grove After School Education and Safety Program (ASES)

Suspensions and Expulsions by Student Group

Suspensions and Expulsions by Student Group		2023-24 School Year
Student Group	Suspensions Rate	Expulsions Rate
All Students	0.20%	0.00%
Female	0.00%	0.00%
Male	0.40%	0.00%
Non-Binary	0.00%	0.00%
American Indian or Alaska Native	0.00%	0.00%
Asian	0.00%	0.00%
Black or African American	0.00%	0.00%
Filipino	0.00%	0.00%
Hispanic or Latino	0.30%	0.00%
Native Hawaiian or Pacific Islander	0.00%	0.00%
Two or More Races	0.00%	0.00%
White	0.00%	0.00%
English Learners	0.40%	0.00%
Foster Youth	0.00%	0.00%
Homeless	0.00%	0.00%
Socioeconomically Disadvantaged	0.20%	0.00%
Students Receiving Migrant Education Services	0.00%	0.00%
Students with Disabilities	1.30%	0.00%





California Physical Fitness Test

Each spring, all students in grades 5, 7 and 9 are required to participate in the California Physical Fitness Test (PFT). The Fitnessgram is the designated PFT for students in California public schools put forth by the State Board of Education. Encouraging and assisting students in establishing lifelong habits of regular physical activity is the primary goal of the Fitnessgram. The table shows the percentage of students participating in each of the five fitness components for the most recent testing period. For more detailed information on the California PFT, please visit www.cde.ca.gov/ta/tg/pf.

California Physical Fitness Test				2023-24 School Year	
Percentage of Students Participating In Each Of The Five Fitness Components					
Grade	Component 1:	Component 2:	Component 3:	Component 4:	Component 5:
	Aerobic Capacity	Abdominal Strength and Endurance	Trunk Extensor and Strength and Flexibility	Upper Body Strength and Endurance	Flexibility
5	94.44%	94.44%	94.44%	94.44%	94.44%

Chronic Absenteeism by Student Group

Chronic Absenteeism by Student Group			2023-24 School Year	
Student Group	Cumulative Enrollment	Chronic Absenteeism Eligible Enrollment	Chronic Absenteeism Count	Chronic Absenteeism Rate
All Students	444	435	53	12.20%
Female	214	207	22	10.60%
Male	230	228	31	13.60%
Non-Binary	0	0	0	0.00%
American Indian or Alaska Native	0	0	0	0.00%
Asian	80	80	6	7.50%
Black or African American	0	0	0	0.00%
Filipino	0	0	0	0.00%
Hispanic or Latino	348	340	46	13.50%
Native Hawaiian or Pacific Islander	0	0	0	0.00%
Two or More Races	0	0	0	0.00%
White	0	0	0	0.00%
English Learners	227	223	31	13.90%
Foster Youth	0	0	0	0.00%
Homeless	11	❖	❖	❖
Socioeconomically Disadvantaged	413	404	50	12.40%
Students Receiving Migrant Education Services	0	0	0	0.00%
Students with Disabilities	77	75	9	12.00%

❖ Scores are not shown when the number of students tested is ten or less, either because the number of students in this category is too small for statistical accuracy or to protect student privacy.

Parental Involvement

There are many opportunities in the district for parental involvement through participation in parent support organizations, booster clubs, school site councils and district-level advisory committees.

Parents at R. F. Hazard participate in various leadership opportunities including: District English Learner Advisory Committee (DELAC), School Site Council (SSC), English Learner Advisory Committee (ELAC), District English Learner Advisory Committee (DELAC), Parent Leadership Academy and our Parent-Teacher-Organization (PTO). Parents have the opportunity to volunteer to help coordinate and implement community building events and fundraisers such as our annual Fun Run and Cultural Festival. We also welcome parent volunteers in the classroom to support our teachers and scholars. Through our partnership with OC GRIP, parents can volunteer to greet students and welcome them at our entry gates every morning. We provide monthly parent meetings such as Pastries with the Principal and offer free parent trainings through Olive Crest (i.e. First Five Years and Active Parenting), Laura's House, and through our partnership with OC GRIP. Throughout the year, Hazard hosts varied family nights focused on STEAM and family literacy, along with Back-to-School Parent Night in August and Open House in April. Our Annual Cultural Festival has become a wonderful tradition where our entire school community comes together to celebrate diversity through carnival games, food and cultural performances by our Boys and Girls Club members. We value the partnership we have established with our parent community.

For more information on how to become involved at the school, please contact Claudia Garcia, PTO president, at (714) 663- 6403.

California School Dashboard

The California School Dashboard (Dashboard) <https://www.caschooldashboard.org/> reflects California's new accountability and continuous improvement system and provides information about how LEAs and schools are meeting the needs of California's diverse student population. The Dashboard contains reports that display the performance of LEAs, schools, and student groups on a set of state and local measures to assist in identifying strengths, challenges, and areas in need of improvement.

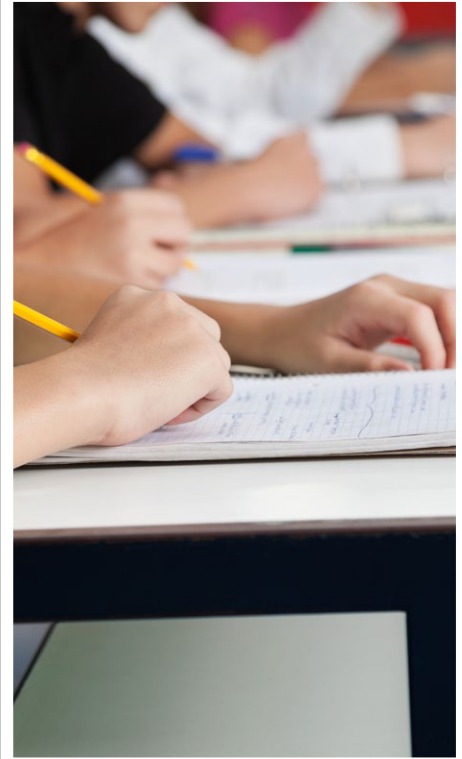


Statewide Assessments

Statewide assessments (i.e., California Assessment of Student Performance and Progress [CAASPP] System includes the Smarter Balanced Summative Assessments for students in the general education population and the California Alternate Assessments [CAAs] for English language arts/literacy [ELA] and mathematics given in grades three through eight and grade eleven. Only eligible students may participate in the administration of the CAAs. CAAs items are aligned with alternate achievement standards, which are linked with the Common Core State Standards [CCSS] for students with the most significant cognitive disabilities).

The CAASPP System encompasses the following assessments and student participation requirements:

1. **Smarter Balanced Summative Assessments and CAAs for ELA** in grades three through eight and grade eleven.
2. **Smarter Balanced Summative Assessments and CAAs for mathematics** in grades three through eight and grade eleven.
3. **California Science Test (CAST) and CAAs for Science** in grades five, eight, and once in high school (i.e., grade 10, 11 or 12).



CAASPP Test Results in Science for All Students

The table below shows the percent of students meeting or exceeding the State standard on the CAASPP—California Science Test (CAST) and the California Alternate Assessment for Science (CAA for Science) for grades 5, 8 and once in high school (i.e., grade 10, 11 or 12).

Percentage of Students Meeting or Exceeding State Standard					Two-Year Data	
	Hazard ES		Garden Grove USD		California	
Subject	22-23	23-24	22-23	23-24	22-23	23-24
Science	20.27%	37.04%	37.69%	38.27%	30.29%	30.73%

CAASPP Test Results in ELA and Mathematics for All Students

The table below shows the percent of students meeting or exceeding the State standards on the California Assessment of Student Performance and Progress (CAASPP) Smarter Balanced Summative Assessments and California Alternate Assessments (CAAs) for English language arts/literacy (ELA) and mathematics for grades 3-8 and 11.

Percentage of Students Meeting or Exceeding State Standard					Two-Year Data	
	Hazard ES		Garden Grove USD		California	
Subject	22-23	23-24	22-23	23-24	22-23	23-24
English language arts/literacy	61%	59%	58%	59%	46%	47%
Mathematics	57%	58%	48%	48%	34%	35%

CAASPP by Student Group: Science, English Language Arts and Mathematics

The tables on the following pages display the percentage of students that met or exceeded state standards in science, English language arts/literacy and mathematics for the school by student groups.

The “percentage met or exceeded” is calculated by taking the total number of students who met or exceeded the standard on the Smarter Balanced Summative Assessment plus the total number of students who met the standard on the CAA divided by the total number of students who participated in both assessments.

Note: The number of students tested includes all students who participated in the test whether they received a score or not. However, the number of students tested is not the number that was used to calculate the achievement level percentages. The achievement level percentages are calculated using only students who received scores.



CAASPP Test Results by Student Group: Science (grade 5)

Percentage of Students Meeting or Exceeding State Standard					2023-24 School Year
Science					
Group	Total Enrollment	Number Tested	Percentage Tested	Percentage Not Tested	Percentage Met or Exceeded
All students	55	54	98.18%	1.82%	37.04%
Female	31	30	96.77%	3.23%	23.33%
Male	24	24	100.00%	0.00%	54.17%
American Indian or Alaska Native	❖	❖	❖	❖	❖
Asian	❖	❖	❖	❖	❖
Black or African American	❖	❖	❖	❖	❖
Filipino	❖	❖	❖	❖	❖
Hispanic or Latino	45	44	97.78%	2.22%	22.73%
Native Hawaiian or Pacific Islander	❖	❖	❖	❖	❖
Two or more races	❖	❖	❖	❖	❖
White	❖	❖	❖	❖	❖
English Learners	18	18	100.00%	0.00%	0.00%
Foster Youth	❖	❖	❖	❖	❖
Homeless	❖	❖	❖	❖	❖
Military	❖	❖	❖	❖	❖
Socioeconomically disadvantaged	54	53	98.15%	1.85%	35.85%
Students receiving Migrant Education services	❖	❖	❖	❖	❖
Students with Disabilities	❖	❖	❖	❖	❖

❖ Scores are not shown when the number of students tested is ten or less, either because the number of students in this category is too small for statistical accuracy or to protect student privacy.





CAASPP Test Results by Student Group: English Language Arts (grades 3-6)

Percentage of Students Meeting or Exceeding State Standard					2023-24 School Year
English Language Arts					
Group	Total Enrollment	Number Tested	Percentage Tested	Percentage Not Tested	Percentage Met or Exceeded
All students	235	225	95.74%	4.26%	58.67%
Female	109	102	93.58%	6.42%	62.75%
Male	126	123	97.62%	2.38%	55.28%
American Indian or Alaska Native	❖	❖	❖	❖	❖
Asian	34	34	100.00%	0.00%	82.35%
Black or African American	❖	❖	❖	❖	❖
Filipino	❖	❖	❖	❖	❖
Hispanic or Latino	195	185	94.87%	5.13%	54.05%
Native Hawaiian or Pacific Islander	❖	❖	❖	❖	❖
Two or more races	❖	❖	❖	❖	❖
White	❖	❖	❖	❖	❖
English Learners	96	87	90.63%	9.37%	24.14%
Foster Youth	❖	❖	❖	❖	❖
Homeless	❖	❖	❖	❖	❖
Military	❖	❖	❖	❖	❖
Socioeconomically disadvantaged	224	215	95.98%	4.02%	58.14%
Students receiving Migrant Education services	❖	❖	❖	❖	❖
Students with Disabilities	40	40	100.00%	0.00%	22.50%

❖ Scores are not shown when the number of students tested is ten or less, either because the number of students in this category is too small for statistical accuracy or to protect student privacy.

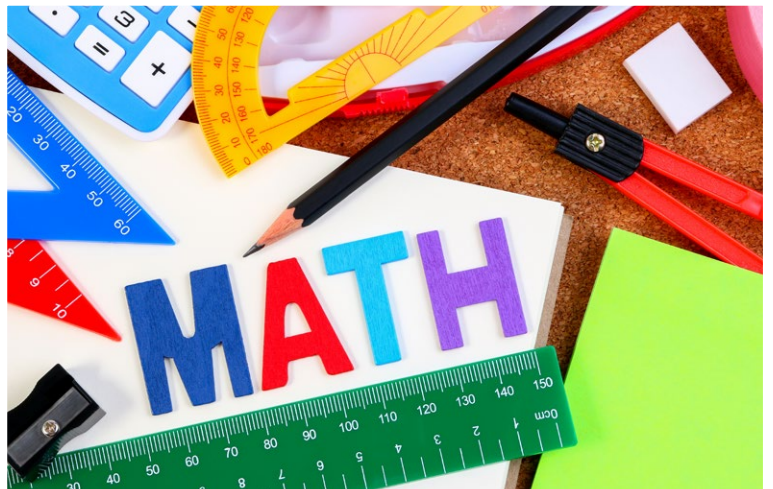
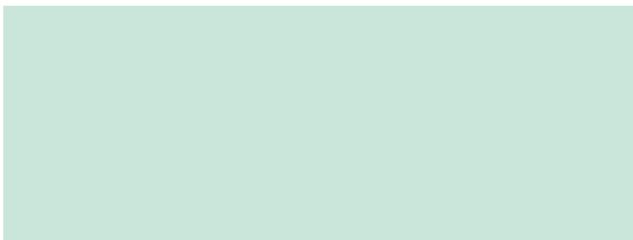




CAASPP Test Results by Student Group: Mathematics (grades 3-6)

Percentage of Students Meeting or Exceeding State Standard					2023-24 School Year
Mathematics					
Group	Total Enrollment	Number Tested	Percentage Tested	Percentage Not Tested	Percentage Met or Exceeded
All students	235	232	98.72%	1.28%	57.76%
Female	109	107	98.17%	1.83%	53.27%
Male	126	125	99.21%	0.79%	61.60%
American Indian or Alaska Native	❖	❖	❖	❖	❖
Asian	34	34	100.00%	0.00%	100.00%
Black or African American	❖	❖	❖	❖	❖
Filipino	❖	❖	❖	❖	❖
Hispanic or Latino	195	192	98.46%	1.54%	50.00%
Native Hawaiian or Pacific Islander	❖	❖	❖	❖	❖
Two or more races	❖	❖	❖	❖	❖
White	❖	❖	❖	❖	❖
English Learners	96	95	98.96%	1.04%	35.79%
Foster Youth	❖	❖	❖	❖	❖
Homeless	❖	❖	❖	❖	❖
Military	❖	❖	❖	❖	❖
Socioeconomically disadvantaged	224	222	99.11%	0.89%	57.21%
Students receiving Migrant Education services	❖	❖	❖	❖	❖
Students with Disabilities	40	40	100.00%	0.00%	25.00%

❖ Scores are not shown when the number of students tested is ten or less, either because the number of students in this category is too small for statistical accuracy or to protect student privacy.





Textbooks and Instructional Materials

District K-12 textbooks in the subjects of English language arts, mathematics, history/social science, health, foreign language, visual and performing arts and science have been adopted from those approved by the State Board of Education. The Garden Grove Unified School District Board of Education has adopted district textbooks in the subjects listed below. K-12 textbooks for mathematics, history/social science, science, English language arts (including reading) and world language are aligned with state-adopted content standards and state or national frameworks following the state adoption schedule.

All GGUSD students, including all English learners, have textbooks and instructional materials, including science laboratory equipment at the 9-12 level, that are current and in good condition in accordance with Education Code requirements. All textbooks and instructional materials are provided in sufficient quantities for each student for use in class and to take home.

Textbooks and Instructional Materials List

2024-25 School Year

Subject	Textbook	Adopted
Reading/language arts	<i>Wonders California</i> , McGraw-Hill (K-6)	2016-17
Math	<i>Envision California Common Core</i> , Pearson (K-6)	2015-16
History/social science	<i>Social Studies Alive!</i> , TCI	2019-20
Science	Twig Science for California (K-6)	2020-21
Visual and performing arts	---	1998-99
Health (Positive Action, Life Skills)	---	2004-05

Currency of Textbooks

This table displays the date when the most recent hearing was held to adopt a resolution on the sufficiency of instructional materials.

Currency of Textbooks

2024-25 School Year

Data collection date	9/3/2024
----------------------	----------

Availability of Textbooks and Instructional Materials

The following lists the percentage of pupils who lack their own assigned textbooks and instructional materials.

Percentage of Students Lacking Materials by Subject

2024-25 School Year

Hazard ES	Percentage Lacking
Reading/language arts	0%
Mathematics	0%
Science	0%
History/social science	0%
Visual and performing arts	0%
Foreign language	0%
Health	0%

Public Internet Access

Individuals without home Internet access can use computers with Internet connections at public libraries within the Garden Grove Unified School District to download and view School Accountability Report Cards. Access to the Internet at libraries is generally provided on a first-come, first-served basis. Other use restrictions include the hours of operation, the length of time that a workstation may be used (depending on availability), the types of software programs available on a workstation, and the ability to print documents.

See below for library contact information for your community.

Orange County Public Library

Tel: (714) 566-3000

www.ocpl.org

Anaheim Public Library

Tel: (714) 765-1880

www.anaheim.net/library

Santa Ana Public Library

Tel: (714) 647-5250

www.santa-ana.org/library

The Orange County Public Library serves the cities of Cypress, Fountain Valley, Westminster, Garden Grove and Stanton within the GGUSD.

Quality of Textbooks

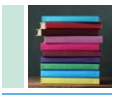
The following table outlines the criteria required for choosing textbooks and instructional materials.

Quality of Textbooks

2024-25 School Year

Criteria	Yes/No
Are the textbooks adopted from the most recent state-approved or local governing-board-approved list?	Yes





School Facility Good Repair Status

The table shows the results of the school's most recent inspection using the Facility Inspection Tool (FIT) or equivalent school form. This inspection determines the school facility's good repair status using ratings of good condition, fair condition or poor condition. The overall summary of facility conditions uses ratings of exemplary, good, fair or poor. Additional information about the condition of the school's facilities may be obtained by speaking with the principal.

School Facility Good Repair Status		2024-25 School Year
Items Inspected	Repair Status	
Systems: Gas leaks, sewer, mechanical systems (heating, ventilation and HVAC)	Good	
Interior: Interior surfaces (floors, ceilings, walls and window casings)	Good	
Cleanliness: Pest/vermin control, overall cleanliness	Good	
Electrical: Electrical systems	Good	
Restrooms/fountains: Restrooms, sinks and drinking fountains	Good	
Safety: Fire safety, emergency systems, hazardous materials	Good	
Structural: Structural condition, roofs	Good	
External: Windows/doors/gates/fences, playgrounds/school grounds	Good	
Overall summary of facility conditions	Exemplary	
Date of the most recent FIT report	6/17/2024	



School Facilities

Continued from left

Bond proceeds, combined with state matching funds, are financing such wide-ranging school improvements as renovating electrical circuitry, plumbing, lighting, roofing, intercom and fire-safety systems; improving energy efficiency; replacing doors, windows, and outdated heating and ventilation systems; updating playground equipment and safety matting; upgrading telecommunications systems to accommodate current technology; replacing restroom plumbing, tile, and fixtures; retrofitting schools for better accessibility for the disabled; burying new underground conduits for technology growth; installing new classroom carpeting; repainting school interiors and exteriors; and new underground natural-gas piping.

We have completed air conditioning for classrooms in all 65 schools. All seven high schools have been completed. Throughout the district, modernization projects are on-time and on budget. All seven comprehensive high schools had LED field and tennis court lighting completed. We appreciate your patience as we work to ensure that all of our schools remain successful and comfortable places to learn and work.

School Facilities

Garden Grove Unified School District (GGUSD) continues to pride itself on maintaining quality facilities to provide a safe learning and working environment for its students and staff. School custodial and district maintenance staff conduct frequent inspections to ensure that all sites are clean, safe, well maintained and in good repair. Mobile cleaning teams have been used to provide in-depth cleaning-assistance services. The Maintenance Department is in the process of implementing preventative maintenance programs that ensure all schools are maintained at an efficient operating level. All classrooms, playground areas and working space for students and staff satisfy building capacity requirements of the Education Code.

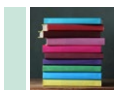
The Board of Education has adopted a five-year maintenance program for the improvement of school sites, and major site-improvement projects are approved annually as needed. Graffiti-removal personnel help to keep schools free from graffiti.

The Garden Grove Unified School District has always emphasized the importance of a clean, safe environment for learning and working. The environment of each campus is a matter of pride for students, staff and parents. To ensure our facilities are in good repair condition, custodians at each site perform monthly inspections, and the district maintenance crews attempt to complete their work orders in a timely manner. Several schools have planted individual gardens, allowed sponsored projects by both the PTA and the Eagle Scout program with the Boys Scouts of America, to enhance our campuses throughout the district.

Hazard Elementary School was built in 1956. The school has 14 permanent classrooms and 14 portable classrooms in use on the campus. The school also has a computer lab, library, multipurpose room and staff lounge.

In June 2010, GGUSD voters approved Measure A, authorizing \$250 million in general obligation bonds and enabling the district to qualify for as much as \$200 million in matching state school bond funds for large-scale infrastructure repair, improvement and modernization projects. As an added funding bonus, \$47 million in supplemental school-improvement grants were secured, increasing the total projected Measure A budget to \$503 million over the seven to eight years required for the completion of all bond-financed projects. Additionally, Measure P, authorizing \$311 million was approved by voters in 2016 that enabled our district to implement many improvements including seismic upgrades, new athletic stadiums and added air conditioning and energy conservation improvements to all of the remaining Elementary Schools.

Continued on sidebar



Teacher Preparation and Placement

These tables display the number and percent of teacher authorization/assignment as well as the total number and percent of teaching positions at the school, district and state levels. For questions concerning the assignment of teachers outside their subject area of competence or the credential status of teachers, visit the California Commission on Teacher Credentialing website at <https://www.ctc.ca.gov/>.

Teacher Preparation and Placement					2020-21 School Year	
Authorization/Assignment	School Number	School Percent	District Number	District Percent	State Number	State Percent
Fully (Preliminary or Clear) Credentialed for Subject and Student Placement (properly assigned)	17.1	94.5%	1,441.7	83.1%	228,366.1	83.1%
Intern Credential Holders Properly Assigned	0.0	0.0%	0.5	0.0%	4,205.9	1.5%
Teachers Without Credentials and Misassignments ("ineffective" under ESSA)	0.0	0.0%	80.7	4.7%	11,216.7	4.1%
Credentialed Teachers Assigned Out-of-Field ("out-of-field" under ESSA)	0.0	0.0%	8.5	0.5%	12,115.8	4.4%
Unknown	1.0	5.5%	202.6	11.7%	18,854.3	6.9%
Total Teaching Positions	18.1	100.0%	1,734.1	100.0%	274,759.1	100.0%

Teacher Preparation and Placement					2021-22 School Year	
Authorization/Assignment	School Number	School Percent	District Number	District Percent	State Number	State Percent
Fully (Preliminary or Clear) Credentialed for Subject and Student Placement (properly assigned)	18.6	100.0%	1,444.6	85.0%	234,405.2	84.0%
Intern Credential Holders Properly Assigned	0.0	0.0%	1.5	0.1%	4,853.0	1.7%
Teachers Without Credentials and Misassignments ("ineffective" under ESSA)	0.0	0.0%	67.7	4.0%	12,001.5	4.3%
Credentialed Teachers Assigned Out-of-Field ("out-of-field" under ESSA)	0.0	0.0%	15.4	0.9%	11,953.1	4.3%
Unknown	0.0	0.0%	170.3	10.0%	15,831.9	5.7%
Total Teaching Positions	18.6	100.0%	1,699.6	100.0%	279,044.8	100.0%

Teacher Preparation and Placement					2022-23 School Year	
Authorization/Assignment	School Number	School Percent	District Number	District Percent	State Number	State Percent
Fully (Preliminary or Clear) Credentialed for Subject and Student Placement (properly assigned)	16.7	94.4%	1,449.0	84.0%	231,142.4	83.2%
Intern Credential Holders Properly Assigned	0.0	0.0%	0.0	0.0%	5,566.4	2.0%
Teachers Without Credentials and Misassignments ("ineffective" under ESSA)	0.0	0.0%	21.8	1.3%	14,938.3	5.4%
Credentialed Teachers Assigned Out-of-Field ("out-of-field" under ESSA)	0.0	0.0%	81.3	4.7%	11,746.9	4.2%
Unknown	1.0	5.6%	172.5	10.0%	14,303.8	5.2%
Total Teaching Positions	17.7	100.0%	1,724.7	100.0%	277,697.8	100.0%

Note: The data in these tables is based on Full Time Equivalent (FTE) status. One FTE equals one staff member working full time; one FTE could also represent two staff members who each work 50 percent of full time. Additionally, an assignment is defined as a position that an educator is assigned to based on setting, subject, and grade level. An authorization is defined as the services that an educator is authorized to provide to students.

The data source is the California State Assignment Accountability System (CalSAAS) provided by the Commission on Teacher Credentialing. For information on the CalSAAS, visit the CALPADS web page at <https://www.cde.ca.gov/ds/sp/cl/calpadsupdfdash201.asp>.

For more information on the definitions listed above, refer to the Updated Teacher Equity Definitions web page at <https://www.cde.ca.gov/pd/ee/teacherequitydefinitions.asp>.



Teachers Without Credentials and Misassignments (considered "ineffective" under ESSA)

This table displays the number of authorization/assignments of teachers with permits and waivers; misassignments; and vacant positions. For questions concerning the permits, waivers, and misassignment of teachers, visit the California Commission on Teacher Credentialing website at <https://www.ctc.ca.gov/>.

Teachers Without Credentials and Misassignments		Three-Year Data	
Authorization/Assignment	2020-21	2021-22	2022-23
Permits and Waiver	0.0	0.0	0.0
Misassignments	0.0	0.0	0.0
Vacant Positions	0.0	0.0	0.0
Total Teachers Without Credentials and Misassignments	0.0	0.0	0.0



Credentialed Teachers Assigned Out-of-Field (considered "out-of-field" under ESSA)

This table displays the number of credentialed teachers authorized on a permit or waiver and local assignment options. For more information on the definitions listed above, refer to the California Commission on Teacher Credentialing's Administrator's Assignment Manual at <https://www.ctc.ca.gov/credentials/manuals>.

Credentialed Teachers Assigned Out-of-Field		Three-Year Data	
Indicator	2020-21	2021-22	2022-23
Credentialed Teachers Authorized on a Permit or Waiver	0.0	0.0	0.0
Local Assignment Options	0.0	0.0	0.0
Total Out-of-Field Teachers	0.0	0.0	0.0

Class Assignments

This table displays the percentage of misassignments of English learners and teachers with no credential, permit or authorization to teach. Misassignment and vacant teacher position data should be available in the district's personnel office.

Class Assignments		Three-Year Data	
Indicator	2020-21	2021-22	2022-23
Misassignments for English Learners (a percentage of all the classes with English learners taught by teachers that are misassigned)	0.0%	0.0%	0.0%
No credential, permit or authorization to teach (a percentage of all the classes taught by teachers with no record of an authorization to teach)	0.0%	0.0%	0.0%

The data source is the California State Assignment Accountability System (CalSAAS) provided by the Commission on Teacher Credentialing. For information on the CalSAAS, visit the CALPADS web page at <https://www.cde.ca.gov/ds/sp/cl/calpadsup-dflash201.asp>.

For more information on the definitions listed above, refer to the Updated Teacher Equity Definitions web page at <https://www.cde.ca.gov/pd/ee/teacherequitydefinitions.asp>.

Academic Counselors and School Support Staff

This table displays information about academic counselors and support staff at the school and their full-time equivalent (FTE).

Ratio of Pupils to Academic Counselors and School Support Staff Data	
2023-24 School Year	
	Ratio
Pupils to Academic counselors	✧
Support Staff	FTE
Counselor (academic, social/behavioral or career development)	0.000
Library media teacher (librarian)	0.000
Library media services staff (paraprofessional)	0.000
Psychologist	0.500
Social worker	0.500
Nurse/health assistant	0.625
Speech/language/hearing specialist	0.500
Resource specialist (nonteaching)	0.000
✧ Not applicable.	



Financial Data

The financial data displayed in this SARC is from the 2022-23 fiscal year. The most current fiscal information available provided by the state is always two years behind the current school year and one year behind most other data included in this report. For detailed information on school expenditures for all districts in California, see the California Department of Education (CDE) Current Expense of Education & Per-pupil Spending web page at www.cde.ca.gov/ds/fd/ec. For information on teacher salaries for all districts in California, see the CDE Certificated Salaries & Benefits web page at www.cde.ca.gov/ds/fd/cs. To look up expenditures and salaries for a specific school district, see the Ed-Data website at www.ed-data.org.

District Financial Data

This table displays district teacher and administrative salary information and compares the figures to the state averages for districts of the same type and size based on the salary schedule. Note: The district salary data does not include benefits.

Salary Data		2022-23 Fiscal Year
	Garden Grove USD	Similar Sized District
Beginning teacher salary	\$69,358	\$56,572
Midrange teacher salary	\$112,263	\$87,185
Highest teacher salary	\$135,489	\$119,664
Average elementary school principal salary	\$171,982	\$148,486
Average middle school principal salary	\$172,905	\$154,835
Average high school principal salary	\$205,644	\$170,007
Superintendent salary	\$354,528	\$338,699
Teacher salaries: percentage of budget	30.00%	31.41%
Administrative salaries: percentage of budget	4.00%	4.86%

Financial Data Comparison

This table displays the school's per-pupil expenditures from unrestricted sources and the school's average teacher salary and compares it to the district and state data.

Financial Data Comparison		2022-23 Fiscal Year
	Expenditures Per Pupil From Unrestricted Sources	Annual Average Teacher Salary
Hazard ES	\$10,976	\$130,707
Garden Grove USD	\$11,706	\$114,799
California	\$10,771	\$94,625
School and district: percentage difference	-6.2%	+13.9%
School and California: percentage difference	+1.9%	+38.1%

School Financial Data

The following table displays the school's average teacher salary and a breakdown of the school's expenditures per pupil from unrestricted and restricted sources.

School Financial Data	
2022-23 Fiscal Year	
Total expenditures per pupil	\$18,062
Expenditures per pupil from restricted sources	\$7,086
Expenditures per pupil from unrestricted sources	\$10,976
Annual average teacher salary	\$130,707



Expenditures Per Pupil

Supplemental/restricted expenditures come from money whose use is controlled by law or by a donor. Money that is designated for specific purposes by the district or governing board is not considered restricted. Basic/unrestricted expenditures are from money whose use, except for general guidelines, is not controlled by law or by a donor.

Data for this year's SARC was provided by the California Department of Education and school and district offices. For additional information on California schools and districts and comparisons of the school to the district, the county and the state, please visit DataQuest at <http://dq.cde.ca.gov/dataquest>. DataQuest is an online resource that provides reports for accountability, test data, enrollment, graduates, dropouts, course enrollments, staffing and data regarding English learners. Per Education Code Section 35256, each school district shall make hard copies of its annually updated report card available, upon request, on or before February 1.

All data accurate as of December 2024.

School Accountability Report Card

Published by:

SchoolStatus

www.schoolstatus.com